

# WORLD POSTAL BOOKLET CATALOGUE

carnets-markenhftchen-postzegelboekjes-häftten-booklets-carnets-markenhftchen-postzegelboekjes-häftten-booklets-carnets-markenhftchen

## Introduction

The countries and postal entities described in this volume never formed a political unit. However, all were under British influence, as a crown colony (Cape of Good Hope), under a charter of the British South Africa company (Rhodesia), under a League of Nations mandate (South West Africa) or just as a member of the (British) Commonwealth (of Nations). Although British settlers never gained the majority in a population census, English still is the officially recognized language in all these countries, in some cases besides another official language, like the Afrikaans in South Africa.

Borders were moved, countries were united or separated, and new names were born, all during the years stamps and postal booklets were released. The map will show the various changes.

After the end of the Apartheid in South Africa one must admit that all countries of Southern Africa are governed by the majority of the people, and that parliaments are elected in a democratic way.

The following countries or entities having issued postal booklets:

<i>Country/Entity</i>	<i>Present Name</i>	<i>Number of booklets</i>	<i>Years</i>
Cape of Good Hope	South Africa	2	1902
Natal	South Africa	2	1904-1905
Transvaal	South Africa	3	1905-1909
South Africa	South Africa	21	1913-1994
Southern Rhodesia	Zimbabwe	6	1924-1954, 1964
Nyasaland	Malaŵi	2	1954
Rhodesia&Nyasaland	Zimbabwe/Malaŵi	2	1955-1963
Northern Rhodesia	Zambia	1	1964
Zambia *)	Zambia	*)	1968-1981
Rhodesia	Zimbabwe	6	1967-1974
(Portug.) Angola *)	Angola	*)	1914
Angola *)	Angola	*)	1991-1993
(Port) Mozambique *)	Mozambique	*)	1914
Botswana (ex Betchuanaland)	Botswana	34	1989-1993
Lesotho (ex Basutoland)	Lesotho	7	1981-1983
South West Africa **)	Namibia	2	1985-1986

\*) The booklets of Zambia are catalogued in THE WORLD POSTAL BOOKLET CATALOGUE in September 1989, booklets of Angola and Mozambique are featured in volume II of Portugal & Colonies, in August 1992.

\*\*\*) For the booklets of German Southwest-Africa see Michel Spezial or the Handbuch der Markenheftchen der deutschen Kolonien, Schwarz/RSV 1989

Catalogues and other sources:

- Scott vol. I British Commonwealth
- Stanley Gibbons Commonwealth 1994/95
- SAC + SACC South Africa Colour Catalogue
- Michel Afrika 1993
- Yvert & Tellier 1992
- I.B. Mathews, Transvaal Philately 1986
- Harriet Work: British Empire Postage Stamp Booklets, NYC 1958
- Jacques H. Rogers: Postal Booklet Catalogue, NYC 1947

editors: Jean Duson, Wulf Horst en Walter de Rooy

distribution: Postuumaat c/o - Chopinstraat 2 - NL - 3533 EM Utrecht

Copyright© Postzegelvereniging Postuumaat, The Netherlands.

All rights reserved. No part of this catalogue may be reproduced in any form or by any means, without the prior permission of the Postzegelvereniging Postuumaat.

# WORLD POSTAL BOOKLET CATALOGUE

carnets-markenneftchen-postzegelboekjes-häftes-booklets-carnets-markenneftchen-postzegelboekjes-häftes-booklets-carnets-markenneftchen

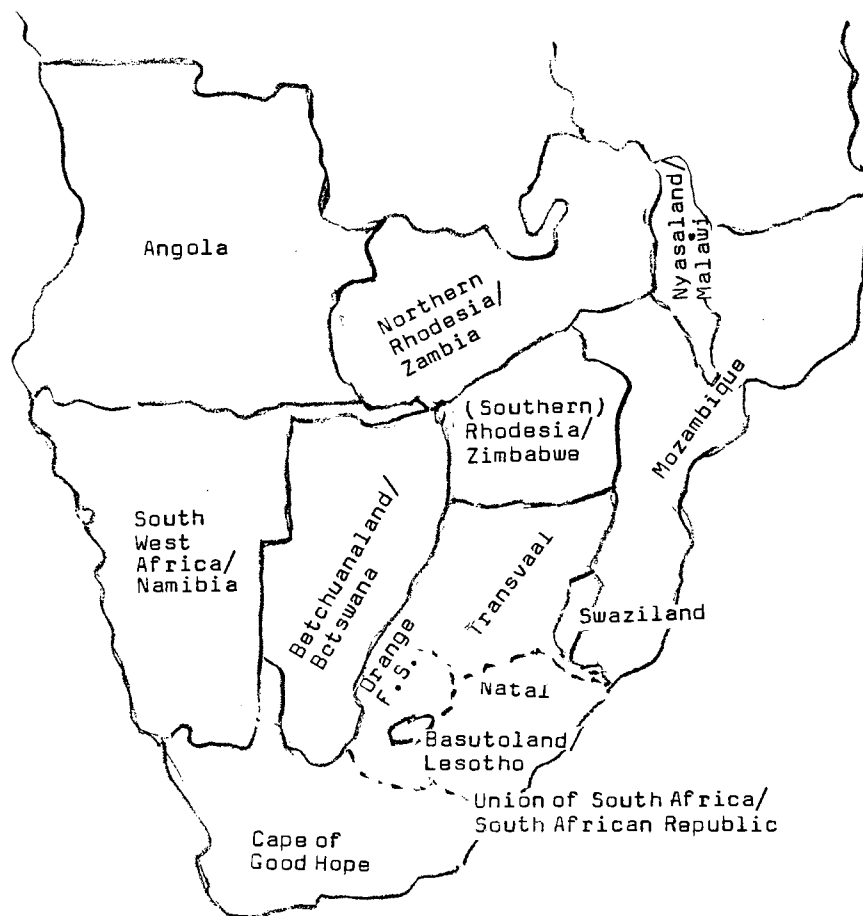
For the 'easy reader' the Cross Reference Table may be sufficient to trace a booklet which only appears in one shape without varieties of the containing stamps, the inscription on the covers or the mounting of the panes. For detailed studies and pricing of varieties the reading of the comprehensive cataloguing is necessary.

To determine exactly which stamp and which variety contains a booklet of South Africa one should consult either the Stanley Gibbons (colour shades) or the Michel (printing methods) catalogues, while, on the contrary, other catalogues, like the SAAC and the Yvert just list the most common stamp.

Future catalogues within the scope of THE WORLD POSTAL BOOKLET CATALOGUE will list all the known varieties, also to encourage further studies for the specialist collector. However, recently issued booklets without any variety will be listed in a brief and concise version in a Cross Reference Table only.

Assisted by members and guests of THE WORLD POSTAL BOOKLET CATALOGUE - Committee - Hans-Günther Blach, Jean Duson, Peter Fortriede, Jürgen Hettlinger, Philippe Maarek, Robert L. Maurer, Walter de Rooy - compiled by Wulf D. Horst, A.I.J.P.

January 17, 1995.

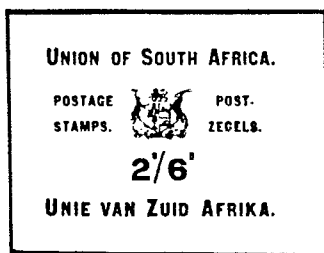


editors: Jean Duson, Wulf Horst en Walter de Rooy  
distribution: Postuumaat c/o - Chopinstraat 2 - NL - 3533 EM Utrecht

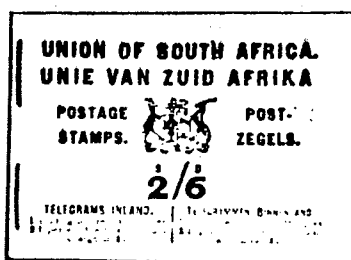
Copyright© Postzegelvereniging Postuumaat, The Netherlands.  
All rights reserved. No part of this catalogue may be reproduced in any form or by any means, without the prior permission of the Postzegelvereniging Postuumaat.

carnets-markenheftchen-postzegelboekjes-häftten-booklets-carnets-markenheftchen-postzegelboekjes-häftten-booklets-carnets-markenheftchen

- 1a 1913 George V (SAC B1)(SG SB1) \$5000  
 1b 1913 (SAC B2) (Work 1)(Rogers 1A) \$3500  
 1c 1920 (SAC B3)(SG SB2)(Work 2)(Rogers 1B) \$3500
- 1a cover: black on Pillar-Box red (stapled left(l) or  
 1b black on dark red (right (r),  
 1c black on pink 2 staples
- 1a cover-design: A - English text up, Afrikaans text below  
 1bc B - both languages up
- coverside 1: Coat of Arms, face value  
 2: Inland Postage  
 3: Oversea Postage  
 4: Telegrams
- FACE VALUE: 2/6 sh.
- 2 panes of 12 stamps of 1/2d, George V, green  
 6 stamps: SAC 2, Sc 2, SG 3C, Michel 2A, Yvert 2  
 4 panes of 24 stamps of 1d, George V, scarlet  
 6 stamps: SAC 3, Sc 3, SG 4C, Michel 3A, Yvert 2A
- Watermark: Single Springbok's Head - upright
- 1a Interleaves: 6, plain unwaxed paper  
 1bc 6, plain waxed paper
- NOTE: Work listed a no.3 (WBC 1c) booklet with white paper interleaves, the advertisements printed in black. This booklet has not been seen by the authors. Please report!



A



B



C

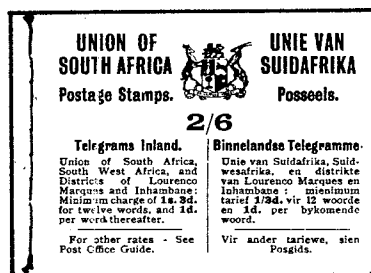
- 2 1921 George V (SAC B4)(SG SB3)(Work 4)(Rogers 2) \$700
- cover: black on salmon-pink, size 67x49mm, stapled left
- cover-design: C - Inscription both left and right of Coat of Arms, Telegrams lower half
- coverside 1: Coat of Arms, face value, Telegrams  
 2: Inland Postage
- 2var surcharged 2d over 1 1/2d by handstamp  
 3: P.O. Savings Bank Letters ..... 2d. per loz.  
 4: Overseas Postage surcharged 2d over 1 1/2d by handstamp
- 2var FACE VALUE: 3/- sh.
- 2 panes of 12 stamps of 1/2d, George V, green  
 6 stamps: SAC 2, Sc 2, SG 3C, Michel 2A, Yvert 2  
 2 panes of 12 stamps of 1d, George V, scarlet  
 6 stamps: SAC 3, Sc 3, SG 4C, Michel 3A, Yvert 2A  
 2 panes of 12 stamps of 1 1/2d, George V, orange brown  
 6 stamps: SAC 4, Sc 4, SG 5B, Michel 4A, Yvert 3
- Watermark: Single Springbok's Head - upright (u) or inverted (i)
- 2u Interleaves: 6, white paper, black printing both sides  
 2i Interleaf 1: Lever Soap, engl. Lifebuoy Soap  
 2: Royal Vinolia, engl. Lux, engl.  
 3: Monkey Brand Sanitas  
 4: VIM Lifebuoy Zeep, afr.  
 5: Cobra Royal Vinolia, afr.  
 6: LUX, afr. Lever Zeep, afr.



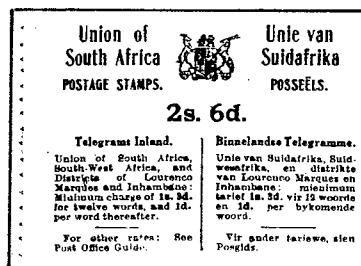


D

- 3 1922 George V (SAC B5)(SG SB4)(Work 5)(Rogers 3) \$500
- cover: black on salmon pink, size 67x49mm, stapled left, 2 staples
- cover-design: D - same as C but surcharged 3/6 sh besides the the 3/0, printed on right hand side of this
- coverside 1: Coat of Arms, face value, surcharge, telegrams  
 2: Inland Postage / ZUID AFRIKA  
 3: P.O. Savings Bank  
 4: Overseas Postage
- FACE VALUE: 3/6 sh, surcharged on 3/-
- 2 panes of 12 stamps of 1/2d, George V, green  
 6 stamps: SAC 2, Sc 2, SG 3d, Michel 2A, Yvert 2  
 2 panes of 12 stamps of 1d, George V, scarlet  
 6 stamps: SAC 3, Sc 3, SG 4C, Michel 3A, Yvert 2A  
 2 panes of 12 stamps of 2d, George V, dull violet  
 6 stamps: SAC 5, Sc 5, SG 6b, Michel 5A, Yvert 4
- 3u Watermark: Single Springbok Head, upright  
 3i inverted
- Interleaves: 6, white paper, black printing both sides
- Interleaf 1: Lever Soap, engl. Lifebuoy Soap  
 2: Royal Vinolia, engl. Lux, engl.  
 3: Monkey Brand Sanitas  
 4: VIM Lifebuoy Zeep, afr.  
 5: Cobra Royal Vinolia, afr.  
 6: Lux, afr. Lever Zeep, afr.



E



F

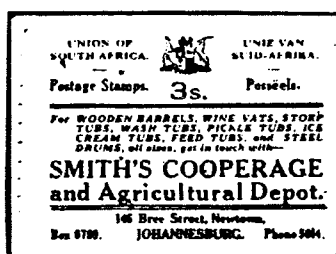
- 4 1926/8 Typhographed Pictorials  
(SAC B6/6a)(SG SB5/6)(Work 6/7/8/9)(Rogers 4a/b/c)
- 4ab cover: black on salmon-pink, size 67x49mm, 4a \$500  
stitched left, black thread, 10 stitches 4b \$500
- 4cd black on pink, size 67x49mm, 4c \$450  
stitched left, white thread, 17 stitches 4d \$600
- 4ab cover-design: E - SUIDAFRIKA (block letters)  
4c F - Suidafrika (only one capital letter)  
4d F - same as F but heavier texture
- coverside 1: Coat of Arms, face value, Telegrams  
2: Inland Postage Rates  
3: Post Office Savings Bank  
4ab 3: Overseas Postage Rates  
4cd 3: Overseas Postage Rates  
4ab 4: Overseas Postage Rates  
4cd 4: Post Office Savings Bank
- FACE VALUE: 2/6 sh.
- 4ab stamps: London Printing, perf 14 1/2 x 14  
2 panes of 12 stamps of 1/2d, Springbok, dk grn & blk  
6 stamps: SAC 29L, Sc 23e, SG 30b, Michel 21/3C, Yvert 16/9  
4 panes of 24 stamps of 1d, van Riebeeck's Ship, car & blk  
6 stamps: SAC 30L, Sc 24f, SG 31a, Michel 23/4C, Yvert 17/20
- 4cd stamps: Pretoria Printing from London Plates, perf 13 1/2 x 14  
2 panes of 12 stamps of 1/2d, Springbok, dk grn & blk  
6 stamps: SAC 29P, Sc 28f, SG 30cb, Michel 21/2C, Yvert 16/9  
4 panes of 24 stamps of 1d, van Riebeeck's Ship, car & blk  
6 stamps: SAC 30P, Sc 24g, SG 31bb, Michel 23/4C, Yvert 17/20
- Watermark: Multiple Springbok's Head - upright
- 4a Interleaves: 6, plain waxed paper  
4b 6, black printing on one side only
- 4b Interleaf 1: Vitae Yeastlets  
2: Winter Holidays  
3: Pearl Gleam  
4: Kerdachin's  
5: Jackson's Antiseptic  
6: Advertise...
- 4cd Interleaves: 6, black printing on both sides  
4c Interleaf 1: King Edward Hotel Seccotime  
2: Beecham's Pills Pyott's Biscuits  
3: General Motors S.J. Hendriksz  
4: Int. Correspondance Schools General Motors  
5: General Motors General Assurance  
6: Thurston Tromp van Diggelen
- 4d Interleaves: 9 of the 12 ads are different from those in booklet  
4c. Please report. The booklet has not been seen  
by the authors.

carnets-markenneftchen-postzegelboekjes-häftten-booklets-carnets-markenneftchen-postzegelboekjes-häftten-booklets-carnets-markenneftchen

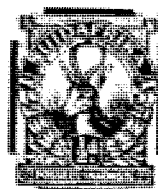
- 5 1930 Unhyphenated Rotogravures Stamps (SAC B8)(SG SB7)(Work 10)(Rogers 5) \$300
- cover: black on bluishpink, stitched left, size 67x49mm
- cover-design: G - Inscription left & right, Suidafrika
- coverside 1: Coat of Arms, face value, ad Firestone
- 2:
- 3:
- 4:
- FACE VALUE: 2/6 sh.
- 2 panes of 12 stamps of 1/2d, Springbok, bl grn & blk
- 6 stamps: SAC 41, Sc 33e, SG 42c, Michel 45/6, Yvert 38
- 4 panes of 24 stamps of 1d, van Riebeeck's Ship, car & blk
- 6 stamps: SAC 42, Sc34g, SG 43c, Michel 47/8, Yvert 39
- 5u Watermark: Multiple Springbok's Head, upright
- 5i inverted
- Perf+Impr.: 15x14, clear impression
- Interleaves: 6, printed on both sides and in black



G



H



- 6 1931 Unhyphenated Rotogravures Stamps (SAC B9)(SG SB8)(Work 11)(Rogers 6) \$400
- cover: black on pink, stitched left, size 67x49mm
- cover-design: H - Inscription left & right, SUID-AFRIKA
- coverside 1: Coat of Arms, face value, ad SMITH'S COOPERAGE
- 2: Remington ad
- 3: Wolf ad
- 4: Postal Information
- FACE VALUE: 3/- sh.
- 2 panes of 12 stamps of 1d, van Riebeeck's Ship, car & blk
- 6 stamps: SAC 42, Sc 34g, SG 43c, Michel 47/8, Yvert 39
- 3 panes of 12 stamps of 2d, Government Building, vio & grey
- 4 stamps: SAC 43, Sc 36e, SG 44c, Michel 49/50, Yvert 40
- 6u Watermark: Multiple Springbok's Head, upright
- 6i inverted
- Perf+Impr.; 1d 15x14, very smudgy impression
- 2d 14x14
- Interleaves: 2 white paper interleaves with postal informations printed in black and positioned between the 1d and 2d values.

carnets-markenhftchen-postzegelboekjes-häftten-booklets-carnets-markenhftchen-postzegelboekjes-häftten-booklets-carnets-markenhftchen

7 1935 Hyphenated unscreened series, ads on panes \$100  
 (SAC B11)(SG SB9)(Work 12)(Rogers 7)

cover: black on lemon, stitched left, white thread  
 size 72x75mm, i.e. almost square

cover-design: I - Large Drifoot ad

coverpage 1: Coat of Arms, Save Pounds Drifoot ad  
 2: Inland Postage  
 3: Post early in the day  
 4: Southern Life Insurance

FACE VALUE: 2/6 sh. SUID-AFRICA (hyphenated)

2 panes of 12 stamps of 1/2d, Springbok, grn & grey

6 stamps: SAC 53, Sc 45c, SG 54b, Michel 75/6A, Yvert 47

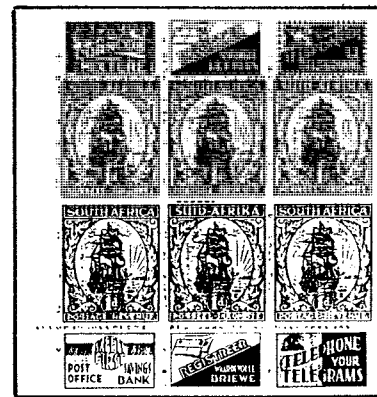
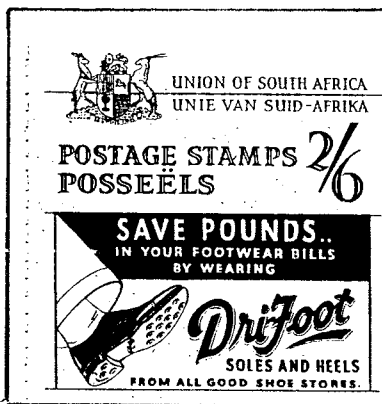
4 panes of 24 stamps of 1d, van Riebeeck's Ship, car & grey

6 stamps: SAC 55, Sc 48j, SG 56c, Michel 77/8A1a, Yvert 48

Margin ads: The three ads on the top and bottom of the margin appear in  
 10 different settings of the 1/2d  
 21 different settings of the 1d - pane

Interleaves: blackbrown (xblue) printing both sides on white

Interleaf 1: Overseas Postage Post Office Savings Bank  
 2: Davbar Cambric Remington Portable  
 3: Health Bureau Summit Pen  
 4: Singer Sewing Mach. x) Post Office Savings Bank  
 5: Telephone Trunk Serv. x) Use the Air Mail



8 1937 Hyphenated unscreened series, no ads on panes \$200  
 (SAC B12)(SG SB10)(Work 14)(Rogers 9a)

cover: black on lemon, stitched left,  
 size 75x75mm, i.e. square

cover-design: I - Large Drifoot ad

coverpage 1: Coat of Arms, Save Pounds Drifoot ad  
 2: Inland Postage  
 3: Post early in the day  
 4: Southern Life Insurance

FACE VALUE: 2/6 sh. SUID-AFRIKA (hyphenated)

2 panes of 12 stamps of 1/2d, Springbok, grn & grey

6 stamps: SAC 53, Sc 46c, SG 75ba, Michel 107/8a, Yvert 47

4 panes of 24 stamps of 1d, van Riebeeck's Ship, car & grey

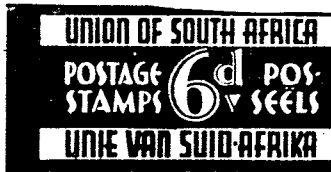
6 stamps: SAC 55, Sc 48c, SG 56e, Michel 77A1a+108a, Yv. 48

Margins: large selvedge margins around without ads

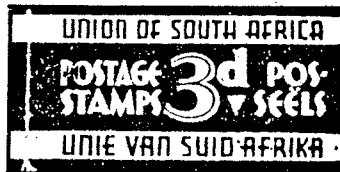
Interleaves: blackbrown (xblue) printing both sides on white

Interleaf 1: Overseas Postage Post Office Savings Bank  
 2: Davbar Cambric Remington Portable  
 3: Health Bureau Summit Pen  
 4: Singer Sewing Mach. x) Post Office Savings Bank  
 5: Telephone Trunk Serv. x) Use the Air Mail

- 9 1937 Vending Machine ("Razor Blade") Booklet \$10  
 (SAC B12)(SG SB11)(Work 13)(Rogers 14)
- cover: red on white, stitched left, size 48x24mm  
 cover-design: J- negative printing  
 coverpage 1: Face Value  
 2: blank  
 3: blank  
 4: GPO, HPK
- FACE VALUE: 6d.  
 2 panes of 4 stamps of 1/2d, Springbok, grn & grey (shades)  
 2 stamps: SAC 53, Sc46d, SG 75bb, Michel 107/8a, Yvert 47?  
 2 panes of 4 stamps of 1d, van Riebeeck's Ship, car & grey (shades)  
 2 stamps: SAC 55, Sc 48d, SG 56f, Michel 77/8A1a, Yvert 48?
- 9ea Composition: the stamp with the English wording left  
 9ae the stamp with the Afrikaans wording left
- Interleaves: none



J

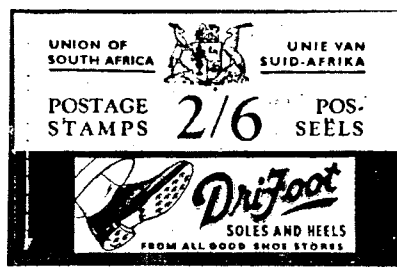


K

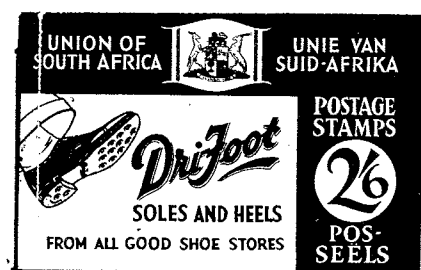
- 10 1938 Vending Machine ("Razor Blade") Booklet \$30  
 (SAC B13)(SG SB12)(Work 17)(Rogers 8,10,13,15)
- cover blue on white, stitched left, size 48x24mm  
 cover-design: K- negative printing  
 coverpage 1: Face Value  
 2: blank  
 3: blank  
 4: GPO, HPK
- FACE VALUE: 3d.  
 1 pane of 2 stamps of 1/2d, Springbok, grn & grey  
 2 stamps: SAC 53, Sc 46d, SG 75bb, Michel 107/8a, Yvert 47?  
 1 pane of 2 stamps of 1d, van Riebeeck's Ship, car & grey  
 2 stamps: SAC 55, Sc 48d, SG 56f, Michel 77/8A1a, Yvert 48?
- 10ea Composition: the stamp with the English wording left  
 10ae the stamp with the Afrikaans wording left
- Interleaves: none



L



M



N

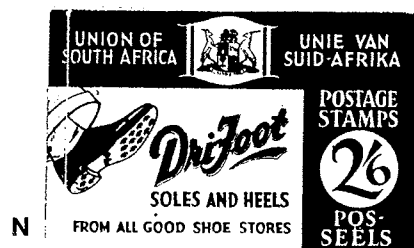


# WORLD POSTAL BOOKLET CATALOGUE

# South Africa

carnets-markenneftchen-postzegelboekjes-häftten-booklets-carnets-markenneftchen-postzegelboekjes-häftten-booklets-carnets-markenneftchen

11ab	1938/9	Borderless Booklets I, small Drifoot ad (SAC B14/5)(SG SB13/4)(Work 15/6)	11a \$250
11cd	1939/40	same, large Drifoot ad (SAC B15/6)(SG SB15/6)(Work 18/9) (Rogers 9b/c)	11b \$120 11c \$2500 11d \$50
11ab	cover:	black on buff/cream, stitched left	
11c		green on buff/cream, stitched left	
11d		blue on buff/cream, stitched left	
11a	size:	72x48mm	
11bcd		75x48mm	
11a	cover-design:	L - Union Arms left top, small Drifoot ad	
11b		M - Union Arms centre top, small Drifoot ad	
11cd		N - Face Value right hand, large Drifoot ad	
11a	coverside 1:	Coat of Arms, Face Value right top	
	2:	) booklet not seen by the ) authors, please report	
	3:		
	4:		
11b	coverside 1:		Coat of Arms, Face Value centre top
	2:	This mark NM	
	3:	Wol	
	4:	Post Office Savings Bank	
11c	coverside 1:	Coat of Arms, Face Value right bottom	
	2:	This mark NM, green printing	
	3:	Wol, green printing	
	4:	Post Office Savings Bank, green printing	
11d:	coverside 1:	Coat of Arms, Face Value right bottom	
	2:	) booklet not seen by the ) authors, please report	
	3:		
	4:		
	FACE VALUE:		2/6 sh.
	2 panes of	12 stamps of 1/2d, Springbok, grn & grey	
	6 stamps:	SAC 53, Sc 46c, SG 75bv, Michel 107/8a, Yvert 47?	
	4 panes of	24 stamps of 1d, van Riebeeck's Ship, car & grey	
	6 stamps:	SAC 55, Sc 48c, SG 56v, Michel 77/8A1a, Yv. 48?	
11a	Interleaves:	1 )	
	(black print	2 )	
	on white	3 ) booklet not seen by the	
	paper,	4 ) authors, please report	
	both sides)	5 )	
		6 )	
11av		Variety: Overseas postage rates "cancelled" by official rubber stamp, in purple	
11b	Interleaves:	1 Stuttafords Postage, engl.	
	(black print	2 Postage, afr. Handbook Farmers	
	on buff	3 Overseas Postage Hulpboek Boere	
	paper,	4 Wool Advertising Railway	
	both sides)	5 Singer Posspaarbank	
		6 Hierdie Mark NM Advertensies Spoorweg	
11c	Interleaves:	1 Telegram Postage, engl.	
	(black print	2 Postage, afr. Handbook Farmers	
	on buff	3 Overseas Postage Hulpboek Boere	
	paper,	4 Wool Advertensies Spoorweg	
	both sides)	5 Singer Posspaarbank	
		6 Hierdie Mark NM Advertising Railway	
11d	Interleaves:	none	



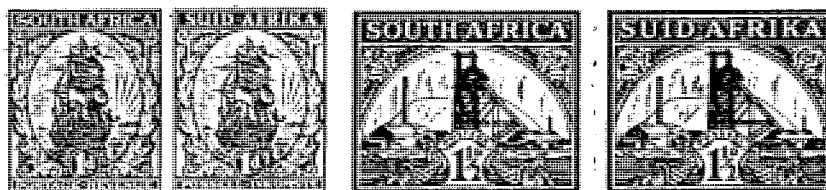
editors: Jean Duson, Wulf Horst en Walter de Rooy

distribution: Postmaaat c/o - Chopinstraat 2 - NL - 3533 EM Utrecht

Copyright© Postzegelvereniging Postmaaat, The Netherlands.

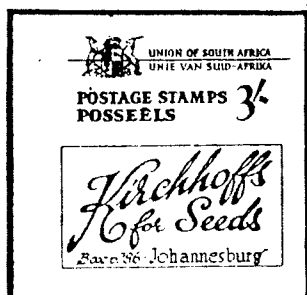
All rights reserved. No part of this catalogue may be reproduced in any form or by any means, without the prior permission of the Postzegelvereniging Postmaaat.

- 12 1940** Borderless Booklets II, larger Drifoot ad (SAC B18)(Work 21)(Rogers 12) \$40
- cover: blue on buff, stitched left, size 75x48mm  
 cover-design: N - Face Value right hand, large Drifoot ad  
 coverside 1: Coat of Arms, Face Value right bottom  
           2: Bayer's Aspirin  
           3: Wool  
           4: Post Office Savings Bank
- FACE VALUE: 2/6 sh.  
 2 panes of 12 stamps of 1/2d, Springbok, grn & grey  
 6 stamps: SAC 53, Sc 47d, SG 75bc, Michel 107/8b, Yvert 47?  
 4 panes of 24 stamps of 1d, van Riebeeck's Ship, rose car & grey  
 6 stamps: SAC 55, Sc 49d, SG 56g, Michel 77/8AIIb, Yv.48?
- Interleaves: 1 Butterworth Postage, afr.  
 (black print 2 Overseas Postage, afr. Postage, eng.  
 on white 3 Overseas Postage, eng. Telegrams  
 paper, 4 Wool Advertensies Spoorweg  
 both sides) 5 Singer Posspaarbank  
           6 Hierdie Merk NM Advertising Railway
- 13 1941** Borderless Booklets II, larger Drifoot ad (SAC B19)(SG SB17)(Work 20)(Rogers 11) \$100
- cover: blue on buff, stitched left, size 75x48mm  
 cover-design: N - Face Value right hand, large Drifoot ad  
 coverside 1: Coat of Arms, Face Value right bottom  
           2: Bayer's Aspirin  
           3: Wool  
           4: Post Office Savings Bank
- FACE VALUE: 2/6 sh.  
 2 panes of 12 stamps of 1/2d, Springbok, grn & grey  
 6 stamps: SAC 53, Sc 47d, SG 75bc, Michel 107/8b, Yv 47/55?  
 2 panes of 12 stamps of 1d, van Riebeeck's Ship, rose car & grey  
 6 stamps: SAC 55, Sc 49d, SG 56g, Michel 77/8AIIb, Yv. 48/56?  
 2 panes of 8 stamps of 1 1/2d, Gold Mine, dk grn & gold  
 4 stamps: SAC 86, Sc51c, SG 57c, Michel 79/80, Yvert 76/7
- Interleaves: 1 Butterworth Postage, afr.  
 (black print 2 Overseas Postage, afr. Postage, eng.  
 on white 3 Overseas Postage, eng. Telegrams  
 paper, 4 Wool Advertensies Spoorweg  
 both sides) 5 Singer Posspaarbank  
           6 Hierdie Mark NM Advertising Railway

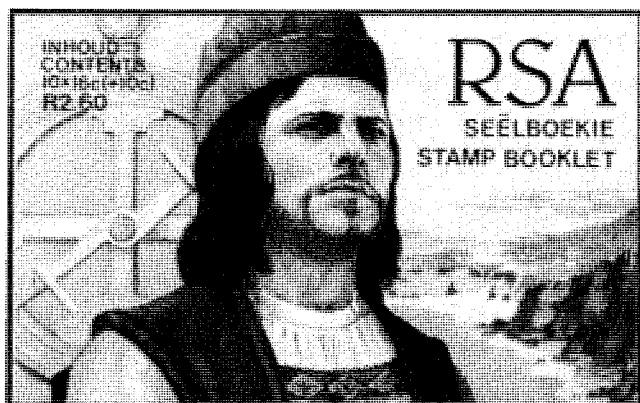


carnets-markenheftchen-postzegelboekjes-häftten-booklets-carnets-markenheftchen-postzegelboekjes-häftten-booklets-carnets-markenheftchen

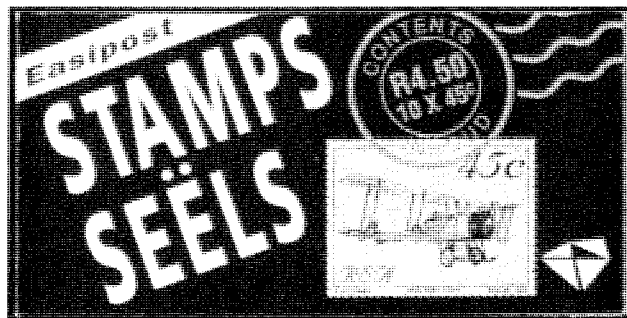
- 14 1948 Screened Pictorials - ~~Foreign~~ Ads \$20  
(SAC B20)(SG SB18)(Work 22)
- cover: black on buff, stitched left side  
size 79x72/75mm
- cover-design: 0 - Face Value right up, Kirchhoffs ad  
lower half
- coverside 1: Coat of Arms upper left  
2: African Gate ad  
3: Ronson Lighter ad  
4: ilnoma ad
- FACE VALUE: 3/- sh.  
2 panes of 12 stamps of 1/2d, Springbok, grn & grey  
6 stamps: SAC 125, Sc 47c, SG 114a, Michel A/B208, Yv?  
2 panes of 12 stamps of 1d, van Riebeeck's Ship, rose car & grey  
6 stamps: SAC 55, Sc 49h, SG 56h, Michel 77/8A11b, Yv?  
2 panes of 12 stamps of 1 1/2d, Gold Mine, sl grn & ocher  
6 stamps: SAC 123, Sc 52d, SG 87b, Michel 137/8, Yv?
- Margin Ads: on horizontal margins  
14:1 1 Register valuable letters, afr.+eng.  
14:2 2 Post early for quick delivery, eng.+afr.  
14:3 3 Pack parcels properly  
14:4 4 Luggpost - die snelste pos  
14:5 5 Air Mail- the quickest mail  
14:6 6 Address letters fully
- Many different combinations may exist in one and the same booklet (+20%)
- Interleaves: (black print on buff paper, both sides)  
1 Volkskorrespondentiekollege Postariewe  
2 Rates of Postage Mills  
3 Tyre Vulcanization Air Mails  
4 Air Mail labels (4) back gummed  
5 Luggpos Firestone  
6 Fine Roses Tea Croxley  
7 Telegrams Letter Cards  
8 GPO/HPK Greys
- 14var Variety Pages 2 (back) and 3 (front) "cancelled" by red ball pen



- 15 1951 Screened Pictorials - s.c. Final Booklet \$15  
(SAC B22)(SG SB19)
- cover: black on buff, size 78x49mm
- cover-design: P - diagonal wording Posseels/Postage Stamps
- coverside 1: Coat of Arms in centre  
2: Postage Rates Overseas  
3: Postage Rates African Postal Union  
4: Postage Rates Inland
- FACE VALUE: 3/6 sh.  
2 panes of 12 stamps of 1/2d, Springbok, grn & grey  
6 stamps: SAC 125, Sc 47d, SG 114ba, Michel A/B208, Yv?  
2 panes of 12 stamps of 1d, van Riebeeck's Ship, car & blk  
6 stamps: SAC 114, Sc 50, SG 115a, Michel 189/90, Yv?  
2 panes of 12 stamps of 2d, Government Bld, pur & sl blue  
6 stamps: SAC 115, Sc 56c, SG 134a, Michel 220/1, Yv?
- Interleaves: 5 paper interleaves, blank



- 16-19 1988 National Flood Disaster e.a. \$6  
 (SAC 659)(SG SB20/21/22/23)
- cover: multicoloured, folded pane pasted into i.b. cover by left side selvedge
- 16 cover-design: Q - Durban Town Hall, size 113x72mm  
 17 R - Bible, size 140x86mm  
 18 S - Bartolomeu Dias, size 113x70mm  
 19 T - Huguenots Monument size 125x90mm
- coverpage 1: Picture, face value  
 2: Description of flood disaster, Afr.  
 3: Description of flood disaster, Eng.  
 4: Postal Rates
- FACE VALUE: R2.60  
 1 pane of 10 stamps of 16c, surcharged +10c  
 10 stamps: and National Flood Disaster/Nasionale Vloedramp  
 a left up English text  
 b left up Afrikaans text
- 16 SAC 633/4, Sc A229, SG 624/5, Michel 714/5  
 17 SAC 939/40, Sc A254, SG 629/30, Michel 719/20  
 18 SAC 645/6, Sc A256, SG 635/6, Michel 725/6  
 19 SAC 651/2, Sc A257, SG 641/2, Michel 731/2
- Interleaves: none



- 20 1993 Aviation e.a. \$3  
 (SG SB24)
- cover: red, 45c stamp, biplane, folded pane pasted into i.b. cover by left side selvedge
- cover-design: U - Easipost, table of contents, size 110x55mm

coverpage	1:	letter, Stamps, Seals	
	2:	Basic Postage Rates	
	3:	blank	
	4:	Savings Bank Certificates, computer number	
		There is a number printed under the left hand extended tab, this is not corresponding to the margin number of the pane.	
FACE VALUE:		R4.50	
1 pane of		10 stamps, se-tenant, multicoloured	
10 stamps:		Sc 849a/y, SG 779/803, Michel 865/89	
Margin number:		Aircraft Type:	Tab numbers seen:
20a	1	Bristol Boxkite, 1907	18
20b	2	DH66 Hercules, 1931	1
20c	3	Short Sunderland, 1945	13
20d	4	BE2e, 1918	7
20e	5	Junkers Ju86, 1936	15
20f	6	Bristol Boxkite, 1907	5
20g	7	DH66 Hercules, 1931	14
20h	8	Short Sunderland, 1945	9
20i	9	BE2e, 1918	16
20j	10	Junkers Ju86, 1936	18
Interleaves:		none	

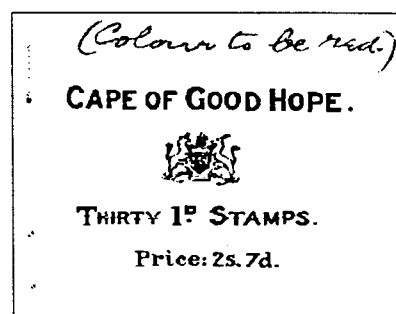
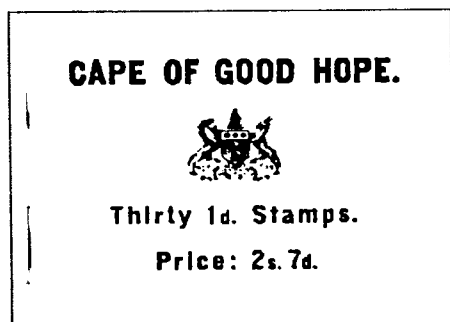


21	1993	Touristic Sights (SG SB25a,b,c,d,e)	e. a. \$5
	cover:	Picture, folded pane pasted into i.b.c. by left hand selvedge	
21a	cover-design:	V - Fauna and Flora - Meadow/Scenery	
21b		W - Land of beauty and splendor - Table Mountain	
21c		X - Special Interest Tours - Blue Train	
21d		Y - National Parks - Lion Family	
21e		Z - A world in one country - Plettenberg Bay	
	coverpage	1: Picture, as to above	
		2: Postal Rates	
		3: SATOUR	
		4: Sights/Views, as to above	
	FACE VALUE:	R8.50, not mentioned on the cover.	
	1 pane of	10 stamps, Sights, se-tenant, 85c, 5 different/	
	10 stamps:	Sc 872a/e, SG 826/30, Michel 912/6 /2 of each	
	Interleaves:	none	

Cross Reference Table

BOOKLET						COVER			STAMPS							
WBC	SAC	SG	SB	Work	Rogers	Year	Type+Identity	Colour	Face	Panes	Den.	Subj.	SAC	Scott	SG	Michel
1a	B1	1				1913	A	Pillar Box-red	2/6	2x6	1/2d	King	2	2	3c	2A
1b	B2		17	1A		1913	B	ZUID AFRIKA dark red	2/6	4x6	1d	King	3	3	4c	3A
1c	B3	2	2+3	1B		1920	B	ZUID AFRIKA pink	2/6							
2	B4	3	4	2		1921	C	ZUID AFRIKA salmon-pink	3/-	2x6	1/2d	King	2	2	3d	2A
										2x6	1d	King	3	3	4c	3A
										2x6	1 1/2d	King	4	4	5b	4A
3	B5	4	5	3		1922	D	ZUID AFRIKA salmon-pink (surcharged)	3/6	2x6	1/2d	King	2	2	3d	2A
										2x6	1d	King	3	3	4c	3A
										2x6	2d	King	5	5	6b	5A
4a	B6	5	6	4a		1926	E	SUIDAFRIKA salmon-pink blank interleaves London	2/6	2x6	1/2d	Springbok	29L	23e	30b	21/2C
4b	B6A		7	4b		1926	E	SUIDAFRIKA salmon-pink ads on interleaves London	2/6	4x6	1d	Ship	30L	24f	31a	23/4C
4c	B7	6	8	4c		1927	F	Suidafrika pink ads on interleaves Pretoria	2/6	same	black thread					
4d			9			1928	F	Suidafrika heavier texture, diff ads on interleaves Pretoria	2/6	same	white thread	29P	23f	30c	21/2C	
											perf	30P	24g	31b	23/4C	
5	B8	7	10	5		1930	G	Suidafrika bluish pink ad Firestone	2/6	2x6	1/2d	Springbok	41	33e	42c	45/6
6	B9	8	11	6		1931	H	SUID-AFRIKA pink ad Smith's	3/-	4x6	1d	Ship	42	34g	43c	47/8
										2x6	1d	Ship	42	34g	43c	47/8
										3x4	2d	Gov.B.	43	36e	44c	49/50
																stamps Suidafrika (no hyphen)
7	B10	9	12	7		1935	I	Drifoot large lemon ads on panes top+bottom	2/6	2x6	1/2d	Springbok	53	45c	54b	75/6A
										4x6	1d	Ship	55	48j	56d	77/BA1a
																stamps Suid-Afrika (hyphenated)
8	B11	10	14	9a		1937	I	Drifoot large lemon no ads on panes' margins	2/6	2x6	1/2d	Springbok		46c	75ba	107/8a
9	B12	11	13	14		1937	J	Razor Blade red Vending Machine	6d	2x2						
10	B13	12	17	8+10+13+15		1938	K	Razor Blade blue Vending Machine	3d	1x2	1/2d	Springbok		46d	75b	107/Ba
										1x2	1d	Ship		48d	56f	77/BA1a
11a	B14	13	15			1938	L	Drifoot small black Union Arms top left	2/6							
11b	B15	14	16			1939	M	Drifoot small black Union Arms top centre	2/6							
11c	B16	15	18	9b		1939	N	Drifoot large green ads on interleaves	2/6	2x6	1/2d	Springbok		46c	75b	107/8a
11d	B17	16	19	9c		1940	N	Drifoot large blue no interleaves	2/6	4x6	1d	Ship		48c	56	77/BA1a
12	B18		21	12		1940	N	Drifoot borderless blue larger ad on cover+interleaves	2/6	2x6	1/2d	Springbok		47c	75bc	107/8b
13	B19	17	20	11		1941	N	Drifoot borderless blue larger ad on cover and ads on interleaves	2/6	4x6	1d	Ship		49h	56g	77/BA11b
										2x6	1/2d	Springbok		47c	75bc	107/8b
										2x6	1d	Ship		49h	56g	77/BA11b
										2x4	1 1/2d	Goldmine		51c	57c	79/80
14	B20	18	22.1-8			1948	O	Kirchhoff's black	3/-	2x6	1/2d	Springbok	125	47d?	114a	A/B208
										2x6	1d	Ship	55	49d	56h	77/BA11b
										2x6	1 1/2d	Goldmine	12352d		87b	137/8
15	B21	19				1951	P	'Final Issue' black	3/6	2x6	1/2d	Springbok	11347d	114ba		A/B208
										2x6	1d	Ship	114	50	115a	189/90
										2x6	2d	Gov. B.	115	56d	134a	220/1
16		20				1988	Q	National	R2.60	1x10	16+10	Durban	633/4	A229	624/5	714/5
17		21				1988	R	Flood	R2.60	1x10	16+10	Bible	637/4	A254	629/30	719/20
18		22				1988	S	Disaster	R2.60	1x10	16+10	Dias	645/6	A256	635/6	725/6
19		23				1988	T		R2.60	1x10	16+10	Huguenots	651/2	A257	641/2	731/2
20a-j		24				1993	U	Aviation	R4.50	1x10	45c	Aircraft	849a/y	779/80		865/89
21a-e		25abcde				1993	V-Z	Touristic Sights	R8.50	1x10	85c	Sights	872a/e	826/30		912/6

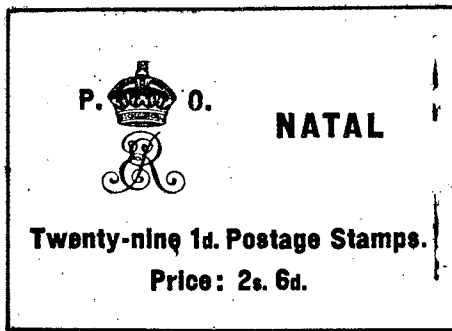
- 1 1902 Edward VII (SG SB1)(Work 1)(Rogers 1) \$3200
- cover: black on pillar-box red, size 65x48mm,  
stapled (2) left or right
- cover-design: A - Coat of Arms
- coverside 1: face value, table of contents  
2: Inland Postage Rates  
3: Foreign Postage Rates  
4: Telegrams
- FACE VALUE: 1/0 1/2 sh. (stamps' value 1/-, overprice 1/2d)
- 2 panes of 12 stamps of 1d, Edward VII, car rose
- 6 stamps: SAC 66, Scott 64, SG 71, Michel 54
- Interleaves: 3, plain unwaxed paper



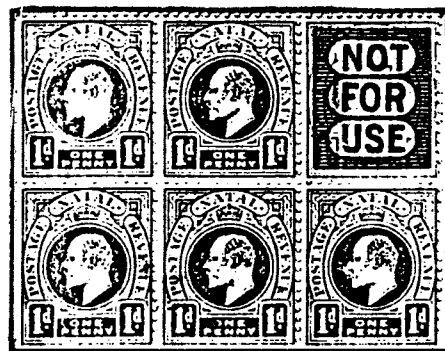
*Cape of Good Hope Essay*

- 2 1902 Edward VIII (SG SB2)(Work 2) \$3200
- cover: black on pillar-box red, size 65x48mm,  
stapled (2) left or right
- cover-design: B - Coat of Arms
- coverside 1: face value, table of contents  
2: Inland Postage Rates  
3: Foreign Postage Rates  
4: Telegrams
- FACE VALUE: 2/7 sh. (stamps' value 2/6, overprice 1d)
- 5 panes of 30 stamps of 1d, Edward VII, car rose
- 6 stamps: SAC 66, Scott 64, SG 71, Michel 54
- Interleaves: 6, plain waxed paper

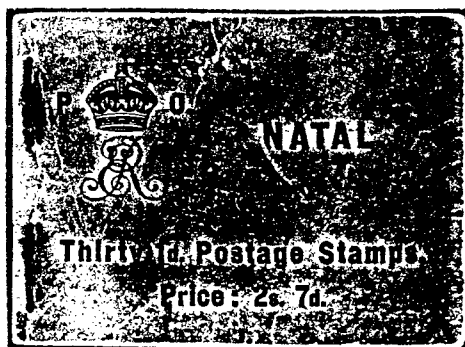
Essay: An essay of the no. 2 booklet was offered and pictured in an auction catalogue in 1980, the table of content on the coverside 1 in block letters and with the handwriting "Colour to be red" on the white cover. Probably this essay comes from the De La Rue - archives. (G.G.Korn in THE INTERLEAF December 1990)



A



- 1 1904 Edward VII (SG SB1)(Work 1)(Rogers 1) \$3000
- cover: black on pillar-box red, size 65x48mm, stapled (2) left or right
- cover-design: A - Crown and Royal Insignia
- coverside 1: face value, table of contents  
 2: Inland Postage Rates  
 3: Foreign Postage Rates  
 4: Telegrams
- FACE VALUE: 2/6 sh. (stamp' value 2/5, overprice 1d)
- 4 panes of 24 stamps of 1d, Edward VII, rose  
 6 stamps: Scott 102a, SG 147, Michel 78  
 1 pane of 5 stamps of 1d, Edward VII, rose  
 5 stamps: plus 1 label "not for use"  
 Scott 102b, SG 147, Michel 78
- Interleaves: 6, plain waxed paper

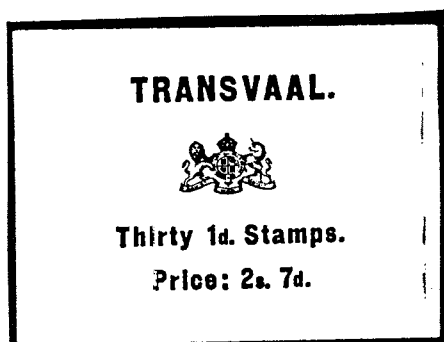


B

- 2 1905 Edward VII (new discovery by P. Fortriede) \$3000
- cover: black on pillar-box red, size 65x48mm, stapled (2) left or right
- cover-design: B - Crown and Royal Insignia
- coverside 1: face value, table of contents  
 2: Inland Postage Rates  
 3: Foreign Postage Rates  
 4: Telegrams
- FACE VALUE: 2/7 sh. (stamps' value 2/6, overprice 1d)
- 5 panes of 30 stamps of 1d, Edward VII, rose  
 6 stamps: Scott 102a, SG 147, Michel 78
- Interleaves: 6, plain waxed paper



- 1 1905** Edward VII (SG SB1) \$3000
- cover: black on pillar-box red, size 67x49mm, stapled (2) left or right
- cover-design: A - small coat of arms
- coverside 1: face value, table of contents
- 2: Inland Postage Rates
- 3: Foreign Postage Rates
- 4: Postal Orders+Telegrams 1/- for 10 words +6d for every additional 5 words
- FACE VALUE: 2/7 sh. (stamps' value 2/6, overprice 1d)
- 5 panes of 30 stamps of 1d, Edward VII, rose&blk
- 6 stamps: Scott 269, SG 261, Michel 119, Yvert 165
- Interleaves: 6, plain waxed paper
- Number issued: 10 365 booklets



A



- 2 1905/6/7** Edward VII (SG SB2)(Work 2) \$3000
- cover: black on pillar-box red, size 67x49mm, stapled (2) left or right
- cover-design: A - small coat of arms
- coverside 1: face value, table of contents
- 2ab 2: Inland Postage Rates
- 2c 2: Foreign Postage Rates
- 2ab 3: Foreign Postage Rates
- 2c 3: Inland Postage Rates
- 2ab 4: Postal Orders, Poundage 1 column, telegrams 1d per word at a minimum charge of 1/-
- 2c 4: Postal Orders, Poundage 2 columns, telegrams as in 2ab
- FACE VALUE: 2/7 sh. (stamps' value 2/6, overprice 1d)
- 5 panes of 30 stamps of 1d, Edward VII, carmine=monocoloured
- 6 stamps: Scott 282b, SG 274, Michel 132, Yvert 178
- Interleaves: 6, plain waxed paper
- 2a Number issued: 1st release end of 1905 51 680 booklets
- 2b 2nd release end of 1906 7 160 booklets
- 2c 3rd release end of 1907 25 870 booklets

carnets-markenheftchen-postzegelboekjes-häftten-booklets-carnets-markenheftchen-postzegelboekjes-häftten-booklets-carnets-markenheftchen

**3 1909** Edward VII (SG SB3)(Work 1)(Rogers 1) \$3500

cover: black on pillar-box red, size 67x49mm, stapled (2) left or right

cover-design: B - small coat of arms

coverside 1: face value, table of contents

3a 2: Postal Orders+Telegrams

3b 2: plain

3a 3: Foreign Postage Rates

3b 3: plain

3a 4: Inland Postage Rates

3b 4: plain

FACE VALUE: 2/6 sh. (stamps value 2/5, overprice 1d)

1 pane of 6 stamps of 1/2d, Edward VII, green=monocoloured  
 Scott 281a, SG 273, Michel 131, Yvert 177

1 pane of 4 stamps of 1/2d, Edward VII, green=monocoloured  
 Scott 281v, SG 273, Michel 131, Yvert 177

4 panes of 24 stamps of 1d, Edward VII, carmine=monocoloured  
 Scott 282b, SG 274, Michel 132, Yvert 178

NOTE: It is almost certain that these booklets (no. 3) were dispatched from De La Rue containing two panes of six 1/2d stamps, and that post office officials removed two of the 1/2d stamps from each booklet before it was placed on sale. Although a quotation was given for a "cancelling plate" similar to that used in Natal booklets for cancelling of the 1/2d stamps, this was not ordered. (I.B.Mathews in Transvaal Philately 1986)

The cover mentions 10 stamps of 1/2d, and in reality there are 12 stamps according to the mentioned price. (obviously the post clerk did not remove the two 2d stamps from the pane) (Jean Duson from his collection)

Interleaves: 7, plain waxed paper

3a Number issued: 1st release mid 1909 25 870 booklets

3b 2nd release Oct 1909 20 680 booklets

Cross Reference Table

Cape of Good Hope, Natal, Transvaal

BOOKLET				COVER			STAMPS							
WBC	SGSB	Work	Rogers	Year	Type+Identity	Colour	Face	Paes	Den.	Subj.	SAC	Scott	SG	Mi
CAPE OF GOOD HOPE														
1	1	1	1	1902	A Coat of Arms	red	1/0 1/2	2x6	1d	E VII	66	64	71	54
2	2	2		1902	B Coat of Arms	red	2/7	5x6	1d	E VII	66	64	71	54
NATAL														
1	1	1	1	1904	A Crown	red	2/6	4x6	1d	E VII		102a	147	78
								1x5	1d	E VII +L		102b	147	78
2				1905	B Crown	red	2/7	5x6	1d	E VII		102a	147	78
TRANSVAAL														
														Yvert
1	1			1905	A small coat/arm	red	2/7	5x6	1d	E VII	165	269	261	119
2abc	2			1905/7	A small coat/arm	red	2/7	5x6	1d	E VII	178	282b	274	132
3ab	3	1	1	1909	B small coat/arm	red	2/6	1x6	1/2d	E VII	177	281a	273	131
								1x4	1/2d	E VII	177	281v	273	131
								4x6	1d	E VII	178	282b	274	132

# WORLD POSTAL BOOKLET CATALOGUE

carnets-markenheftchen-postzegelboekjes-häftten-booklets-carnets-markenheftchen-postzegelboekjes-häftten-booklets-carnets-markenheftchen

## Introduction to The Rhodesias

initial cataloguing by Hans-Günther Blach.

The British South Africa Company obtained a charter in 1889, and in 1892 issued the Company's first stamps in the territories that became known later as Northern and Southern Rhodesia. The stamps were inscribed British South Africa Company until 1909 when the name Rhodesia was also added on the stamps. From 1924/25 each of the two territories used its own stamps until 1954, when the Federation of Rhodesia and Nyasaland issued its own stamps. Nyasaland, Northern Rhodesia and Southern Rhodesia then used Federation stamps until the break-up of the Federation in 1963 when each territory again used its own stamps.

Nyasaland began issuing stamps in 1891, first as British Central Africa and then as Nyasaland. Federation stamps were used from 1954 until 1963 when a new set of Nyasaland stamps was issued. Nyasaland was named Malaŵi in 1964.

Northern Rhodesia first issued its own stamps in 1925 after having used British South Africa Company stamps. Federation stamps were used from 1954 until 1963 when a new set of Northern Rhodesia stamps was issued. In 1964 Northern Rhodesia was named Zambia.

Southern Rhodesia first issued its own stamps in 1924, after having used British South Africa stamps. Federation stamps were used from 1954 until 1964 when a new set of Southern Rhodesia stamps was issued.

In 1965 the name Rhodesia was again used. The stamps of Rhodesia were replaced by a Zimbabwe set in 1980.

The postal authorities having issued booklets in the Rhodesias were:

* Southern Rhondesia	1924-1954, again 1964
* Rhodesia & Nyasaland	1955-1963
* Nyasaland	1954
* Northern Rhodesia	1964
* Rhodesia	1967-1974
* Zambia	1968-1981...

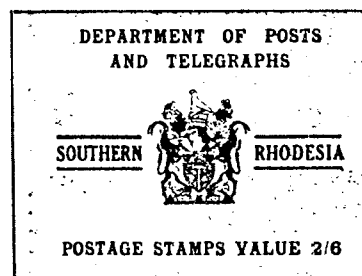
- 1 1924 George V (Admiral) \$1500  
 (SAC 1)(SG SB1)(Work 1)
- cover: black on blue, size 70x55mm,  
 stitched left
- cover-design: A - Coat of Arms
- coverside 1: face value  
 2: Postal Information  
 3: Union Castle Line  
 4: Rhodesian Loan Certificates
- FACE VALUE: 2/6 sh.
- 2 panes of 12 stamps of 1/2d, George V Admiral, dark grn  
 6 stamps: SAC 1, Scott 1, SG 1, Michel 1, Yvert 1  
 4 panes of 24 stamps of 1d, George V Admiral, scarlet  
 6 stamps: SAC 2, Scott 2, SG 2, Michel 2, Yvert 2
- Interleaves: 5, ads on both sides in black on white
- Interleaf 1: Postal Information Standard Bank  
 2: Postal Information cont. Barclays Bank  
 3: Postal Information cont. Aberdeen-Blue Funnel  
 4: Places of Interest Thos. Cook & Sons  
 5: Southern Rhodesias Products Holiday England P&O



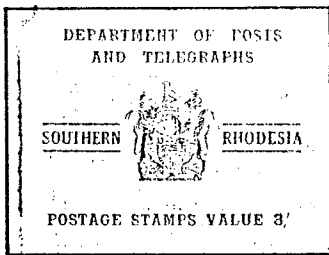
A



C



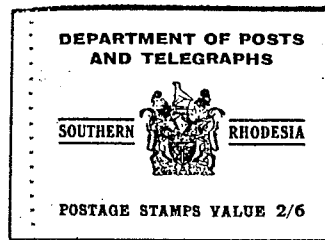
- 2 1931 George V (Field Marshall) 2a \$1500  
 (SAC 2/3)(SG SB2) 2b \$1000
- cover: black on blue, size 70x55mm,  
 stitched left
- 2a cover-design: B - Coat of Arms, thick print  
 2b cover-design: C - Coat of Arms, thin print
- coverside 1: face value  
 2: Postal Information  
 3: Union Castle Line  
 4: Rhodesian Loan Certificates
- FACE VALUE: 2/6 sh.
- 2 panes of 12 stamps of 1/2d, George V Field Marshall, dp grn  
 6 stamps: SAC 15, Scott 16a, SG 15a, Michel 15, Yvert 15  
 4 panes of 24 stamps of 1d, George V Field Marshall, scarlet  
 6 stamps: SAC 16, Scott 17a, SG 16a, Michel 16, Yvert 16
- Interleaves: 5, ads on both sides in black on white
- Interleaf 1: Postal Information Standard Bank  
 2: Postal Information cont. Barclays Bank  
 3: Postal Information cont. Aberdeen-Blue Funnel  
 4: Places of Interest Thos. Cook & Sons  
 5: Southern Rhodesias Products Holiday England P&O



D



E



- 3 1934** George V (Field Marshall) (SAC 4)(SG SB3)(Work 2)(Rogers 1) \$1000
- cover: black on red, size 70x55mm, stitched left
- cover-design: D - Coat of Arms, thin print
- coverside 1: face value  
 2: Postal Rates  
 3: Union Castle Line  
 4: Rhodesian Loan Certificates
- FACE VALUE: 3/- sh.
- 2 panes of 12 stamps of 1/2d, George V Field Marshall, dp grn  
 6 stamps: SAC 15, Scott 16a, SG 15a, Michel 15, Yvert 15  
 2 panes of 12 stamps of 1d, George V Field Marshall, scarlet  
 6 stamps: SAC 16, Scott 17a, SG 16a, Michel 16, Yvert 16  
 2 panes of 12 stamps of 1 1/2d, George V Field Marshall, dp brown  
 6 stamps: SAC 17, Scott 18a, SG 16c, Michel 17, Yvert 17
- Interleaves: 7, ads on both sides in black on white
- Interleaf 1: High Commissioner's Office Rhodesian Tobacco  
 2: If you wish to insert... Anglo African  
 3: Standard Bank Euthymol  
 4: Barclays Bank Blue Funnel  
 5: Places of interest Hobson  
 6: Southern Rhodesia produces William Bain  
 7: Postal Information Postal Information
- 4 1938** March 31 George VI (SAC 5)(SG SB4)(Work 3)(Rogers 2) \$150
- cover: black on buff, size 70x55mm, stitched left
- cover-design: E - Coat of Arms
- coverside 1: face value  
 2: Rates of Postage  
 2: same, handstamped "cancelled" in purple ink  
 4c 2: same, Rates creased out with blue pencil  
 4d 2: blank, unprinted  
 3: blank, unprinted  
 4ad 4: Rhodesian Loan Certificates  
 4b 4: same, handstamped "cancelled" in purple ink  
 4c 4: same, creased out with blue pencil
- FACE VALUE: 2/6 sh.
- 2 panes of 12 stamps of 1/2d, George VI, yellow green  
 6 stamps: SAC 42, Scott 42, SG 40, Michel 42, Yvert 40  
 3 panes of 18 stamps of 1d, George VI, red  
 6 stamps: SAC 42, Scott 43, SG 41, Michel 43, Yvert 41
- Interleaves: 7, ads on both sides in black on buff
- Interleaf 1: P.O. Savings Bank Keep your money...  
 2: Interest you friends Telephone  
 3: Rhodesia House Ring up...  
 4: Buy Rhodesian Don't waste time  
 5: Smoking Rhodesian... See Rhodesia first  
 6: Biggest Zoos... Save time and money  
 7: Start an account... Rhodesia wants more people
- Besides these printed interleaves there are 7 blank unprinted waxed tissue interleaves placed directly behind each stamp pane.
- 4c Interleaf with new postal rates pasted on inside front cover.

carnets-markenhftchen-postzegelboekjes-häftten-booklets-carnets-markenhftchen-postzegelboekjes-häftten-booklets-carnets-markenhftchen

5 1954, Jan. Elizabeth II (SAC 6)(SG SB5)(Work 4) \$50

cover: black on light yellow, size 70x55mm  
stitched left

cover-design: F - Coat of Arms

coverside 1: Face value  
2: Better Travel by CAA  
3: Cargo by CAA  
4: Family Excursion Fares CAA

FACE VALUE: 2/6 sh.

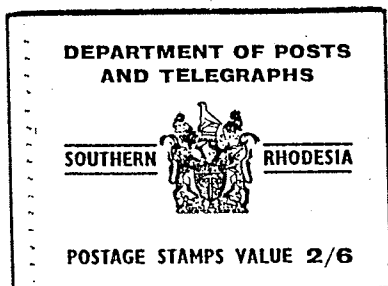
2 panes of 12 stamps of 1/2d, Sable Antelope, rose lake & olgreen  
6 stamps: SAC 80, Scott 81, SG 78, Michel 79, Yvert 79  
4 panes of 24 stamps of 1d, Tobacco Planter, choc & grn  
6 stamps: SAC 81, Scott 82, SG 79, Michel 80, Yvert 80

Interleaves: 6, ads on one side only, black on buff paper

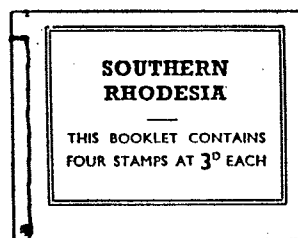
Interleaf 1: Group Travel CAA  
2: 30-days excursion fares  
3: better travel...CAA  
4: Why on earth...CAA  
5: Sportmans Ticket...CAA  
6: Reduced Fares for students

Besides these printed interleaves there are 6 blank unprinted waxed tissue interleaves, placed directly behind each stamp pane.

Number issued: 2 083 booklets



F



G

6 1964, Feb. 19 Elizabeth II, small format (SAC 9)(SG SB6) \$3

cover: black on yellow, size 58x45mm  
stitched left (it has not been determined whether booklets with right hand stitch do exist, nor whether panes with inverted mounting have been produced)

cover-design: G - name of country

coverside 1: table of contents  
2: Post your letter early in the day  
3: Save for the future...  
4: Use the cheap rate...

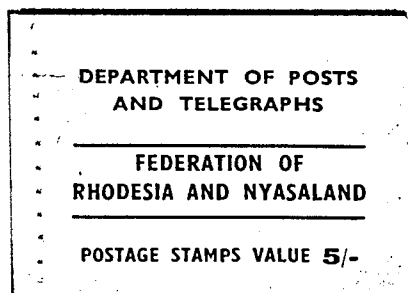
FACE VALUE: 1 sh. (not mentioned on cover)

1 pane of 4 stamps of 3d, Kudu, multicoloured  
4 stamps: SAC 47, Scott 98, SG 95, Michel 97, Yvert 96

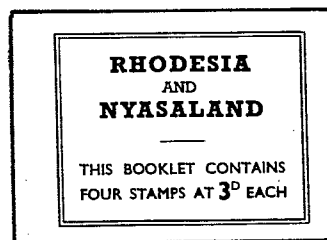
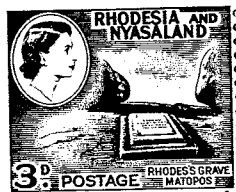
Interleaf: 1, waxed tissue, unprinted

Number issued: 100 400 booklets

- 1 1955, Jan. 1 Elizabeth II (SAC 7)(SG SB1) \$65
- cover: black on yellow, size 74x54mm  
stitched left
- cover-design: A - Federation of Rhodesia and Nyasaland
- coverside 1: face value  
2: NON-STOP 4 1/4 hours to Durban CAA  
3: RETURN £30 Johannesburg CAA  
4: CAA £115 London
- FACE VALUE: 5/- sh.
- 2 panes of 12 stamps of 1/2d, ERII, vermilion  
6 stamps: SAC 1, Scott 141a, SG 1C, Michel 1, Yvert 1  
3 panes of 18 stamps of 1d, ERII, ultramarine  
6 stamps: SAC 2, Scott 142a, SG 2C, Michel 2, Yvert 2  
3 panes of 18 stamps of 2d, ERII, emerald  
6 stamps: SAC 3, Scott 143a, SG 3, Michel 3, Yvert 3
- Interleaves: 8, with ads on one side only, black on white paper, plus 8 waxed tissues mounted between panes and ad-interleaves.
- Interleaf 1: Fly CAA to Johannesburg  
2: Holiday at Lake Nyasa  
3: Falls  
4: Holiday in Lourenço Marques  
5: CAA £115 London  
6: Victoria Falls  
7: Excursion return £30 Johannesburg  
8: Weekend at Victoria Falls
- Number printed: 26 000 booklets

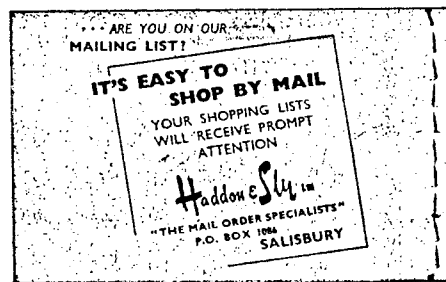
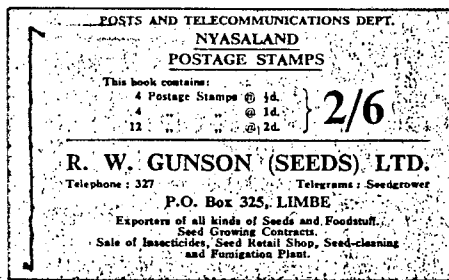


A

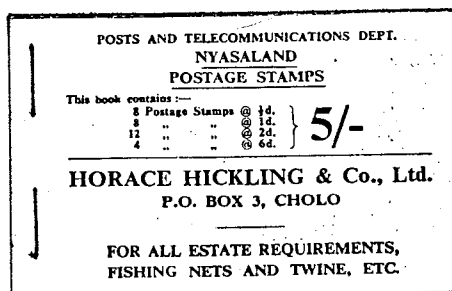


B

- 2 1963, April 4 Elizabeth II (SAC 8)(SG SB2) \$3
- cover: black on yellow orange, size 55x43mm  
stitched left
- cover-design: B - Country's name
- coverside 1: table of contents  
2: post your letters...  
3: save for the future...  
4: Use the cheap rate
- FACE VALUE: 1/- sh. (not mentioned on the cover)
- 1 pane of 4 stamps of 3d, Rhodes' Grave, blue & blk  
4 stamps: SAC 22, Scott 162a, SG 22, Michel 22, Yvert 23
- Interleaves: 1, waxed tissue, unprinted



- 1 1954, Jan. Elizabeth II (SG SB1)(Work 1) \$35
- cover: black on green, size 83x51mm, stitched left or right
- cover-design: A - Large face value and ad Gunson
- coverpage 1: table of contents and face value
- 2: Fly Zambezi to London
- 3: White Star Poultry Farm
- 4: It's easy to shop by mail
- FACE VALUE: 2/6 sh.
- 1 pane of 4 stamps of 1/2d, Lake Nyasa, red brn & blk
- 4 stamps: Scott 97a, SG 173, Michel 173, Yvert 106
- 1 pane of 4 stamps of 1d, Leopard, emerald & org brn
- 4 stamps: Scott 98a, SG 174, Michel 174, Yvert 107
- 3 panes of 12 stamps of 2d, Map & Coat of Arms, orange & blk
- 4 stamps: Scott 100a, SG 176, Michel 176, Yvert 109
- Interleaves: 6, with ads on both sides, black on white plus 5 waxed tissues mounted between panes and ad-interleaves.
- |               |                         |                            |
|---------------|-------------------------|----------------------------|
| Interleave 1: | Principal Postage Rates | Horace Hickling            |
| 2:            | Stavros Yiannakis       | Post Office Savings Bank   |
| 3:            | General Accident        | Agricultural Parcel Post   |
| 4:            | Just the holiday...     | Save money                 |
| 5:            | Stamfields for service  | Sets of Nyasalands postage |
| 6:            | Rhodesia Cement         | Post Office Advice         |
- Number sold: 3 583 booklets



- 2 1954, Jan. Elizabeth II (SG SB2)(Work 2) \$45
- cover: black on buff, size 83x51mm, stapled (2) left or right
- cover-design: B - Large face value and ad Hickling



# WORLD POSTAL BOOKLET CATALOGUE

Nyasaland

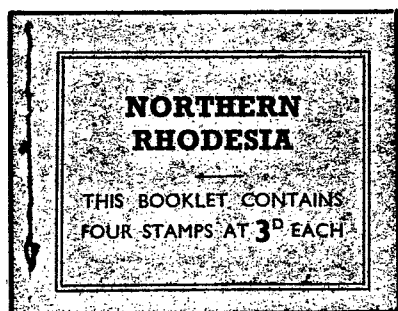
carnets-markenneftchen-postzegelboekjes-häftten-booklets-carnets-markenneftchen-postzegelboekjes-häftten-booklets-carnets-markenneftchen

- coverpage 1: table of contents and face value  
 2: It's easy to shop by mail  
 3: Transport problems?  
 4: Fly Zambesi to London
- FACE VALUE: 5/- sh.
- 2 panes of 8 stamps of 1/2d, Lake Nyasa, red brn & blk  
 4 stamps: Scott 97a, SG 173, Michel 173, Yvert 106  
 2 panes of 8 stamps of 1d, Leopard, emerald & org brn  
 4 stamps: Scott 98a, SG 174, Michel 174, Yvert 107  
 3 panes of 12 stamps of 2d, Map & Coat of Arms  
 4 stamps: Scott 100a, SG 176, Michel 176, Yvert 109  
 1 pane of 4 stamps of 6d, Tea Estate, violet & blk  
 4 stamps: Scott 104a, SG 180, Michel 180, Yvert 113  
 Interleaves: 9, with ads on both sides, black on white plus 8 waxed tissues mounted between panes and ad-interleaves.
- Interleaf 1: Pricipal Postage Rates Holiday afloat  
 2: White Star Poultry Farm Post Office Advice  
 3: Rhodesian Cement Don't waste time  
 4: P.O.Savings Bank Nyasaland Tourist Handbook  
 5: Sets of Nyasaland postage Nyasaland P.O.Savings B.  
 6: Photographs of Nyasaland Are you sure...  
 7: From Karonga... The DeLuxe Telegram  
 8: Social Telegrams Your P.O. Savings Bank  
 9: Agricultural Parcel Please address your letters
- Number sold: 3 026 booklets

# WORLD POSTAL BOOKLET CATALOGUE

Northern Rhodesia

carnets-markenneftchen-postzegelboekjes-häftten-booklets-carnets-markenneftchen-postzegelboekjes-häftten-booklets-carnets-markenneftchen



A



- 1 1964 Elizabeth II \$3  
 (SG SB1)
- cover: black on blue, size 57x45mm  
 1u stitched, upright pane  
 1i stitched, inverted pane
- cover-design: A - Country's name
- coverside 1: table of contents  
 2: Post your letters...  
 3: Save for the future...  
 4: Use the cheap...
- FACE VALUE: 1/- sh. (not mentioned on the cover)
- 1 pane of 4 stamps of 3d, Coat of Arms, orange & blk  
 4 stamps: SAC 78, Scott 78a, SG 78, Michel 78, Yvert 76  
 Interleaves: 1, waxed tissue, unprinted

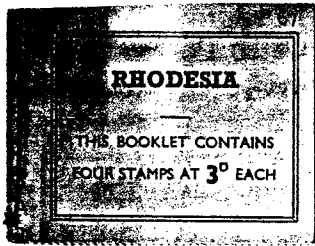
editors: Jean Duson, Wulf Horst en Walter de Rooy

distribution: Postmaaat c/o - Chopinstraat 2 - NL - 3533 EM Utrecht

Copyright© Postzegelvereniging Postmaaat, The Netherlands.

All rights reserved. No part of this catalogue may be reproduced in any form or by any means, without the prior permission of the Postzegelvereniging Postmaaat.

1995

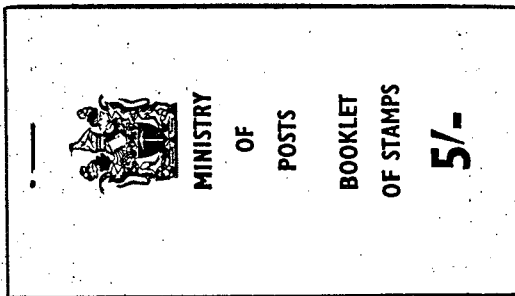


A



133

- 1    1967, Feb.    Elizabeth II    \$3  
                                 (SAC 10)(SG SB7)
- cover:                     black on yellow orange, size 58x49mm  
   stitched left
- cover-design:            A - Country's namn
- coverside 1:             tabel of contents
- 2: Post your letters...
- 3: Save for the future...
- 4: blank, unprinted
- FACE VALUE:            1 sh. (not mentioned on the cover)
- 1 pane of                 4 stamps of 3d, Kudu, lt blue & choc
- 4 stamps:                SAC 133, Scott 225c, SG 376, Michel 26, Yvert 132
- Interleaves:            1, waxed tissue, unprinted
- Number issued:         250 000 booklets, issued in London already Feb.67



B



131

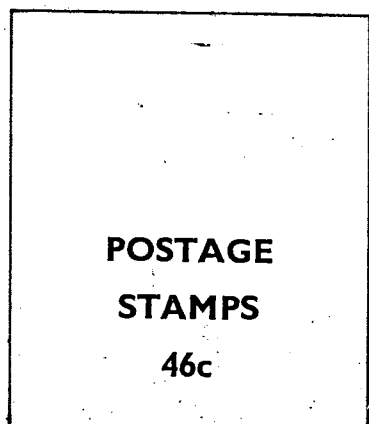


132

- 2    1968, Dec.21    Elizabeth II    \$20  
                                 (SAC 11)(SG SB8)
- cover:                     black on yellow, size 50x93mm  
   stapled (1) at top
- cover-design:            B - Coat of Arms
- coverside 1:             face value
- 2: Principal Postage Rates
- 3: P.O.Savings Bank
- 4: same as front cover
- FACE VALUE:            5/- sh.
- 2 panes of                12 stamps of 1d, Buffalo, ocher & pur
- 6 stamps:                SAC 131, Scott 223, SG 397, Michel 24, Yvert 130
- 1 pane of                6 stamps of 2d, Citrus/Oranges, slate grn & org
- 6 stamps:                SAC 132, Scott 224, SG 398, Michel 25, Yvert 131
- 2 panes of                12 stamps of 3d, Kudu, lt blue & choc
- 6 stamps:                SAC 133, Scott 225, SG 399, Michel 26, Yvert 132
- 2u    mounting:             stamps upright, margin left
- 2i                               stamps inverted, margin right
- 2a    Interleaves:         none
- 2b                               4, waxed tissues, unprinted

carnets-markenneftchen-postzegelboekjes-häftten-booklets-carnets-markenneftchen-postzegelboekjes-häftten-booklets-carnets-markenneftchen

- 3**      **1970, Feb. 17**      Country Varieties (SAC 12)(SG SB9)      \$6
- cover:                    black on yellow, size 67x78mm  
                                  stapled (1) at top
- cover-design:          C- POSTAGE STAMPS 46c
- coverside 1:          face value  
                                  2: Main Postage Rates  
                                  3: blank, unprinted  
                                  4: same as front cover
- FACE VALUE:**        46c
- 3 panes of                12 stamps of 1c, Wheat harvest, multi  
 4 stamps:                SAC 196, Scott 275a, SG 439a, Michel 88, Yvert 182  
 2 panes of                8 stamps of 2 1/2c, Ruins Zimbabwe, multi  
 4 stamps:                SAC 198, Scott 277a, SG 441a, Michel 90, Yvert 184  
 1 pane of                 8 stamps of 3 1/2c, Cecil Rhodes' statue, multi  
 4 stamps:                SAC 200, Scott 279a, SG 442a, Michel 91, Yvert 185
- All panes were especially prepared for booklets, with margins all around. Many varieties may exist.
- Interleaves:          5, waxed tissues, unprinted
- 3a cover-varieties:    1st printing with vertical crease for ease of opening
- 3b                            2nd printing without vertical crease



196

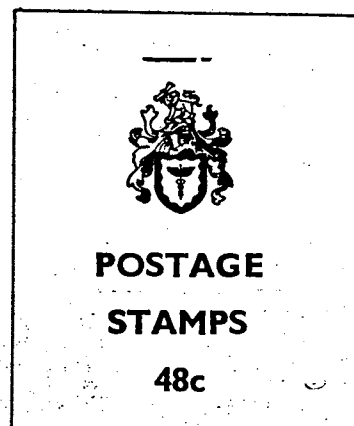


198

C



200



D

- 4**      **1972, Apr. 10**      Country Varieties (SAC 13)(SG SB10)      \$6
- cover:                    green on yellow, size 66x78mm  
                                  stapled (1) at top
- cover-design:          D- Coat of Arms
- coverside 1:          face value  
                                  2: Main Airmail Postage  
                                  3: Main Surface Mail  
                                  4: same as front page
- FACE VALUE:**        48c
- 2 panes of                8 stamps of 1c, Wheat harvest, multi  
 4 stamps:                SAC 196, Scott 275a, SG 439a, Michel 88, Yvert 182  
 4 panes of                16 stamps of 2 1/2c, Ruins Zimbabwe, multi  
 4 panes:                 SAC 198, Scott 277a, SG 441a, Michel 90, Yvert 184
- Interleaves:          5, waxed tissue, unprinted

5 1973, May 7 Country Varieties (SAC 14)(SG SB11) \$30

cover: blue on yellow, size 66x78mm  
stapled (1) at top

cover-design: E - Coat of Arms

coverside 1: face value  
2: Main Airmail Postage  
3: Main Surface Mail  
4: same as front page

FACE VALUE: 50c

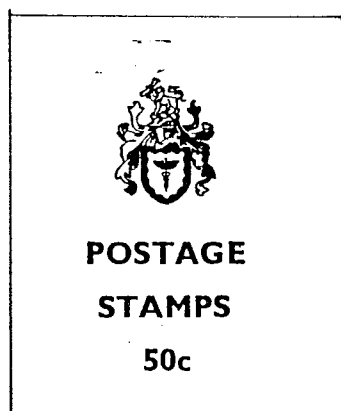
1 pane of 4 stamps of 2 1/2c, Ruins Zimbabwe, multi  
4 stamps: SAC 198, Scott 277a, SG 441a, Michel 90, Yvert 184

2 panes of 8 stamps of 3c, Trailer Truck, multi  
4 stamps: SAC 199, Scott 278a, SG 441ca, Michel 126, Yvert 220

1 pane of 4 stamps of 4c, Cecil Rhodes' statue, multi  
4 stamps: SAC 201, Scott 280a, SG 442ba, Michel 127, Yvert 221

Interleaves: 3, waxed tissues, unprinted

Varieties of margin perforation:				
	Booklet no.	3	4	5
A	imperforated top & right margin	\$20	\$120	\$30
B	imperforated top	\$8	\$35	\$30
C	imperforated right margin	\$6	\$6	\$30
D	perforate all round	\$6	\$6	\$30



199

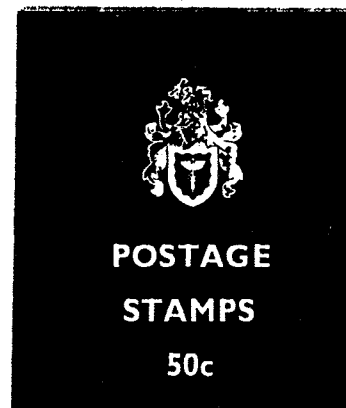


201

E



F



6 1974, Aug. 14 Wild Life (SAC 15)(SG SB12) \$8

cover: white on blue (negative printing), size 67x78mm  
stapled (1) at top

cover-design: F - Coat of Arms

coverside 1: face value  
2: Main Surface Mail  
3: Main Airmail Postage  
4: same as front page

FACE VALUE: 50c

1 pane of 4 stamps of 2 1/2c, Eland, multi  
4 stamps: SAC 252, Scott 329, SG 490a, Michel 141, Yvert 235

2 panes of 8 stamps of 3c, Roan antelope, multi  
4 stamps: SAC 253, Scott 330, SG 491a, Michel 142, Yvert 236

1 pane of 4 stamps of 4c, Reedbuck, multi  
4 stamps: SAC 254, Scott 331, SG 492a, Michel 143, Yvert 237

Interleaves: 3, waxed tissues, buff, unprinted

# WORLD POSTAL BOOKLET CATALOGUE

carnets-markenheftchen-postzegelboekjes-häften-booklets-carnets-markenheftchen-postzegelboekjes-häften-booklets-carnets-markenheftchen

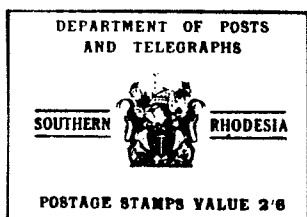
## Southern Rhodesia

## Cross Reference Table

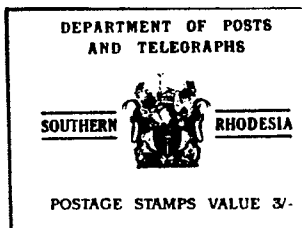
BOOKLET					COVER			STAMPS								
WBC	SAC	SG	SB	Work	Rogers	Year	Type+Identity	Colour	Face	Panes	Den.	SAC	Scott	SG	Mi	Yv
1	1	1		1		1924	A Admiral GV	blue	2/6	2x6 1/2d	1	1	1	1	1	
										4x6 1d	2	2	2	2	2	
2a	2	2				1931	B Field Marshall GV	thick print blue	2/6	2x6 1/2d	15	16a	15a	15	15	
										4x6 1d	16	17a	16a	16	16	
2b	3					1931	C Field Marshall GV	thin print blue	2/6	2x6 1/2d	15	16a	15a	15	15	
										4x6 1d	16	17a	16a	16	16	
3	4	3		2	1	1934	D Field Marshall GV	red	3/-	2x6 1/2d	15	16a	15a	15	15	
										2x6 1d	16	17a	16a	16	16	
										2x6 1 1/2d	17	18a	16c	17	17	
4	5	4		3	2	1938	E George VI	buff	2/6	2x6 1/2d	42	42	40	42	40	
										3x6 1d	43	43	41	43	41	
5	6	5		4		1954	F Elizabeth II	yellow	2/6	2x6 1/2d	80	81	78	79	79	
										4x6 1d	81	82	79	80	80	
6	9	6				1964	G Elizabeth II	orange	1/-	1x4 3d	47	98	95	97	96	
								small size								



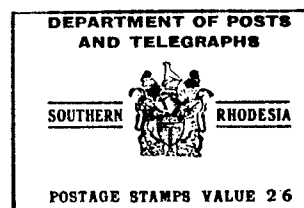
A



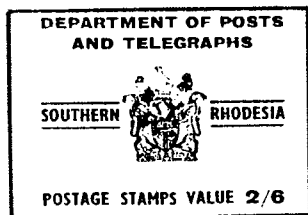
C



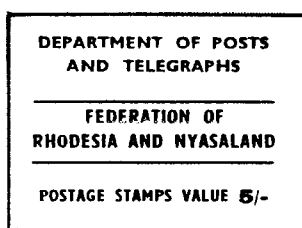
D



E



F



A

## Rhodesia & Nyasaland

## Cross Reference Table

BOOKLET				COVER			STAMPS							
WBC	SAC	SG	SB	Year	Type+Identity	Colour	Face	Panes	Den.	SAC	Scott	SG	Mi	Yv
1	7	1		1955	A Inscription	yellow	5/-	2x6 1/2d	1	141a	1C	1	1	
						Elizabeth II		3x6 1d	2	142a	2C	2	2	
								3x6 2d	3	143a	3	3	3	
2	8	2		1963	B E II small	yellow	1/-	1x4 3d	22	162a	22	22	23	

## Nyasaland

## Cross Reference Table

BOOKLET				COVER			STAMPS							
WBC		SG	SB	Work	Year	Type+Identity	Colour	Face	Panes	Den.	Scott	SG	Mi	Yv
1		1		1	1954	A Gunson Seeds	green	2/6	1x4 1/2d	97a	173	173	106	
									1x4 1d	98a	174	174	107	
									3x4 2d	100a	176	176	109	
2		2		2	1954	B Horace Hickling	buff	5/-	2x4 1/2d	97a	173	173	106	
									2x4 1d	98a	174	174	109	
									3x4 2d	100a	176	176	109	
									1x4 6d	104a	180	180	113	

editors: Jean Duson, Wulf Horst en Walter de Rooy

distribution: Postmaaat c/o - Chopinstraat 2 - NL - 3533 EM Utrecht

Copyright© Postzegelvereniging Postmaaat, The Netherlands.

All rights reserved. No part of this catalogue may be reproduced in any form or by any means, without the prior permission of the Postzegelvereniging Postmaaat.

1995

# WORLD POSTAL BOOKLET CATALOGUE

carnets-markenheftchen-postzegelboekjes-häftchen-booklets-carnets-markenheftchen-postzegelboekjes-häftchen-booklets-carnets-markenheftchen

## Northern Rhodesia+Zambia (see WBC 9/89)

## Cross Reference Table

BOOKLET			Year	COVER		STAMPS							
WBC	SG SB			Type+Identity	Colour	Face	Panes	Den.	SAC	Scott	SG	Mi	Yv
1	1		1964	A E II	small size	blue 1/-	1x4	3d	78	78a	78	78	76
1	2		1968	A	Inscription	buff 20n	2x4	1n		39b	129	39	
					small size		1x4	3n		41b	131	41	
2	3		1968	B	Inscription	buff 30n	2x6	1n		39a	129	39	
					large size		1x6	3n		41a	131	41	
3	4		1970	C	Coat of Arms	green 20n	2x4	1n		39b	129	39	
					small size		1x4	3n		41b	131	41	
4	5		1970	D	Coat of Arms	rose 30n	2x6	1n		39a	129	39	
					large size		1x6	3n		41a	131	41	
5	6		1976	E	Inscription	green 44n	1x4	3n		137	228	143	
					small size		2x4	4n		138	229	144	
6	7		1976	F	Inscription	blue 78n	1x6	4n		138	229	144	
					large size		1x6	9n		141	232	147	
7	8		1981	G	Wings	emerald 66n	1x6	1n		240	337	249	
					medium size		1x6	2n		241	338	250	
							1x6	8n		243	340	252	
8	9		1981	H	Wings	orange K1.08	1x6	8n		243	340	252	
					medium size		1x6	10n		244	341	253	

## Rhodesia

## Cross Reference Table

BOOKLET				Year	COVER		STAMPS							
WBC	SAC	SG SB			Type+Identity	Colour	Face	Panes	Den.	SAC	Scott	SG	Mi	Yv
1	10	7		1967	A E II	small size	orange 1/-	1x4	3d	133	225c	376	26	132
2	11	8		1968	B E II	Wild Life	yellow 5/-	2x6	1d	131	223	397	24	130
								1x6	2d	132	224	398	25	131
								2x6	3d	133	225	399	26	132
3	12	9		1970	C E II	Country	yellow 46c	3x4	1c	196	275a	439a	88	182
								2x4	2 1/2c	198	277a	441a	90	184
								1x4	3 1/2c	200	279a	442a	91	185
4	13	10		1972	D	Country	yellow 48c	2x4	1c	196	275a	439a	88	182
								4x4	2 1/2c	198	277a	441a	90	184
5	14	11		1972	E	Country	blue 50c	1x4	2 1/2c	198	277a	441a	90	184
								2x4	3c	199	278a	441ca	126	220
								1x4	4c	201	280a	442ba	127	221
6	15	12		1974	F	Wild Life	wh/blue 50c	1x4	2 1/2c	252	329	490a	141	235
								2x4	3c	253	330	491a	142	236
								1x4	4c	254	331	492a	143	237

editors: Jean Duson, Wulf Horst en Walter de Rooy

distribution: Postmaaat c/o - Chopinstraat 2 - NL - 3533 EM Utrecht

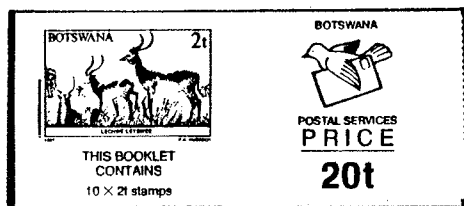
Copyright© Postzegelvereniging Postmaaat, The Netherlands.

All rights reserved. No part of this catalogue may be reproduced in any form or by any means, without the prior permission of the Postzegelvereniging Postmaaat.

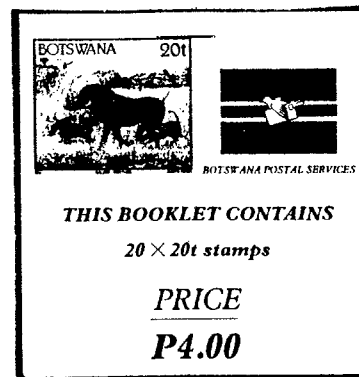
1995

Botswana (formerly Betchuanaland) Concise Listing and Cross Reference Table

BOOKLET		COVER Type+Identity	Colour	Face	STAMPS				
WBC	SG SB Year				Pane	Den.	Scott	SG	Michel
1989		Wild Life, 99x42mm, stapled in upper margin, gutter inbetween 5th & 6th stamp, coversides 2 & 3: Postal Info, 4: ad Haskins							
1	1	A Lechwe	white	20t	1x10	2t	405	620	404
2	3	B Banded Mongoose	red	50t	1x10	5t	408	623	407
3	5	C Hedgehog	grey	80t	1x10	8t	410	625	409
4	7	D Scrub Hare	buff	P1.00	1x10	10t	411	626	410
5	9	E Suricate	pink	P1.50	1x10	15t	413	628	412
6	11	F Caracal	blue	P2.00	1x10	20t	414	629	413
7	13	G Gemsbok	yellow	P3.00	1x10	30t	416	631	415
8	15	H Mountain Reedbuck	green	P4.00	1x10	40t	418	633	417
1989		Wild Life, 82x69mm, stapled in upper margin, gutter inbetween 10/11th&12/13th stamps, coversides 2&3 Postal Info, 4: Haskins							
9	2	I Lechwe	white	40t	1x20	2t	405	620	404
10	4	J Banded Mongoose	red	P1.00	1x20	5t	408	623	407
11	6	K Hedgehog	grey	P1.60	1x20	8t	410	625	409
12	8	L Scrub Hare	buff	P2.00	1x20	10t	411	626	410
13	10	M Suricate	pink	P3.00	1x20	15t	413	628	412
14	12	N Caracal	blue	P4.00	1x20	20t	414	629	413
15	14	O Gemsbok	yellow	P6.00	1x20	30t	416	631	415
16	16	P Mountain Reedbuck	green	P8.00	1x20	40t	418	633	417
1993		Wild Life, 110x39mm, stapled in upper margin, gutter inbetween 5th & 6th stamp, coversides 2 & 3: Postal Info, 4: Barclays							
17	17	Q Oribi	yellow	P1.00	1x10	10t	522	742	521
18	19	R Pangolin	orange	P1.20	1x10	12t	523	743	522
19	21	S Aardwolf	orange	P1.50	1x10	15t	524	744	523
20	23	T Warthog	white	P2.00	1x10	20t	525	745	524
21	25	U Ground Squirrels	pink	P2.50	1x10	25t	526	746	525
22	27	V Honey Badger	green	P3.50	1x10	35t	527	747	526
23	29	W Mole Rat	blue	P4.00	1x10	40t	528	748	527
24	31	X Wild Dogs	pink	P4.50	1x10	45t	529	749	528
25	33	Y Water Mongoose	grey	P5.00	1x10	50t	530	750	529
1993		Wild Life, 75x80mm, stapled in upper margin, gutter inbetween 10/11th&12/13th stamps, coversides 2&3 Postal Info, 4 Barclays							
26	18	Z Oribi	yellow	P2.00	1x20	10t	522	742	521
27	20	AA Pangolin	orange	P2.40	1x20	12t	523	743	522
28	22	AB Aardwolf	orange	P3.00	1x20	15t	524	744	523
29	24	AC Warthog	white	P4.00	1x20	20t	525	745	524
30	26	AD Ground Squirrels	pink	P5.00	1x20	25t	526	746	525
31	28	AE Honey Badger	green	P7.00	1x20	35t	527	747	526
32	30	AF Mole Rat	blue	P8.00	1x20	40t	528	748	527
33	32	AG Wild Dogs	pink	P9.00	1x20	45t	529	749	528
34	34	AH Water Mongoose	grey	P10.00	1x20	50t	530	750	529



A



AC

Lesotho (formerly Basutoland) Concise Listing and Cross Reference Table

BOOKLET			COVER Type+Identity	Face	STAMPS					
WBC	SG	SB Year			Pane	Den.	Scott	SG	Michel	
1	1	1981	A Hoopoe, 165x100mm, stapled (2) left, coverside info+description of birds' species, 4 Lesotho village, 3-digit number on cover, '1991' on stamps without watermarks, 4m 30 face							
			Bakmakierie	1x10	5s	324	440	333IX		
			Cape Robin	1x10	6s	325	441	334IX		
			Yellow Canary	1x10	7s	326	442	335IX		
			Malachite Kingfisher	1x10	25s	328	444	337IX		
2	2	1981	B Royal Wedding, 150x100, stitched 6m							
				1x3	25s	335a	451a	344		
				1x3	50s	336a	451b	345		
				1x3	75s	337a	452a	346		
				1x3	25,50,75	337c	453a	344/6		
3	3	1982	C Scouting, 170x98, glued	5m52						
				2x	6s			367		
				2x	30s			368		
				2x	40s			369		
				2x	50s		361a	474a	370	
				2x	75s			371		
				2x1.50				372		
4	4	1982	D Football WM, 170x102, glued	4m85						
				2x12	15s	363	484/91	373/84		
				1x1	1.25	364	492	385		
5	5	1982	A Hoopoe, 165x100, stapled (2) left, as no.1(1981) but with 4-digit number on cover, '1992' on stamps, watermarked, 4m 30 face							
			Bakmakierie	1x10	5s	324b	503	333IY		
			Cape Robin	1x10	6s	325b	504	334IY		
			Yellow Canary	1x10	7s	326b	505	335IY		
			Malachite Kingfisher	1x10	25s	328b	507	337IY		
6	6	1983	E Fungi, 155x80, glued	3m70						
				1x10,	30s	391a	532c	411/4		
				2x10,	30,50,75s	393a	532b			
7	7	1983	F Manned Flight, 211x100, glued	4m00						
				1x6, 2x7,	30, 40	3/6	545a	424/78		
				60, M1		407a	549			



South West Africa

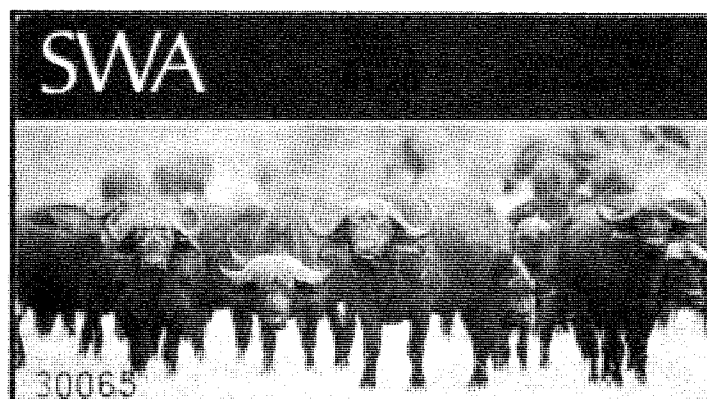
(Up to 1918 German Southwest-Africa, as of 1990 Namibia)

Concise Listing and Cross Reference Table

BOOKLET				COVER Type+Identity	Face	STAMPS					
WBC	SAC	SG	SB Year			Pane	Den.	SAC	Scott	SG	Mi
1a	458	1	1985	A Syncerus Caffer Buffalo	R1.20	1x10	12c	453	456Ba	358ba	570
1b	458	2	1986	B Herd of Buffaloes	R1.20	1x10	12	453	456Bc	358ba	570
				booklet no. 1a:125x74mm							
				coverside 2 Old Mutual							
				3 Philatelic Walter							
				4 Hotel Maltahöhe							



A



B

editors: Jean Duson, Wulf Horst en Walter de Rooy  
distribution: Postmaaat c/o - Chopinstraat 2 - NL - 3533 EM Utrecht

Copyright© Postzegelvereniging Postmaaat, The Netherlands.  
All rights reserved. No part of this catalogue may be reproduced in any form or by any means, without the prior permission of the Postzegelvereniging Postmaaat.